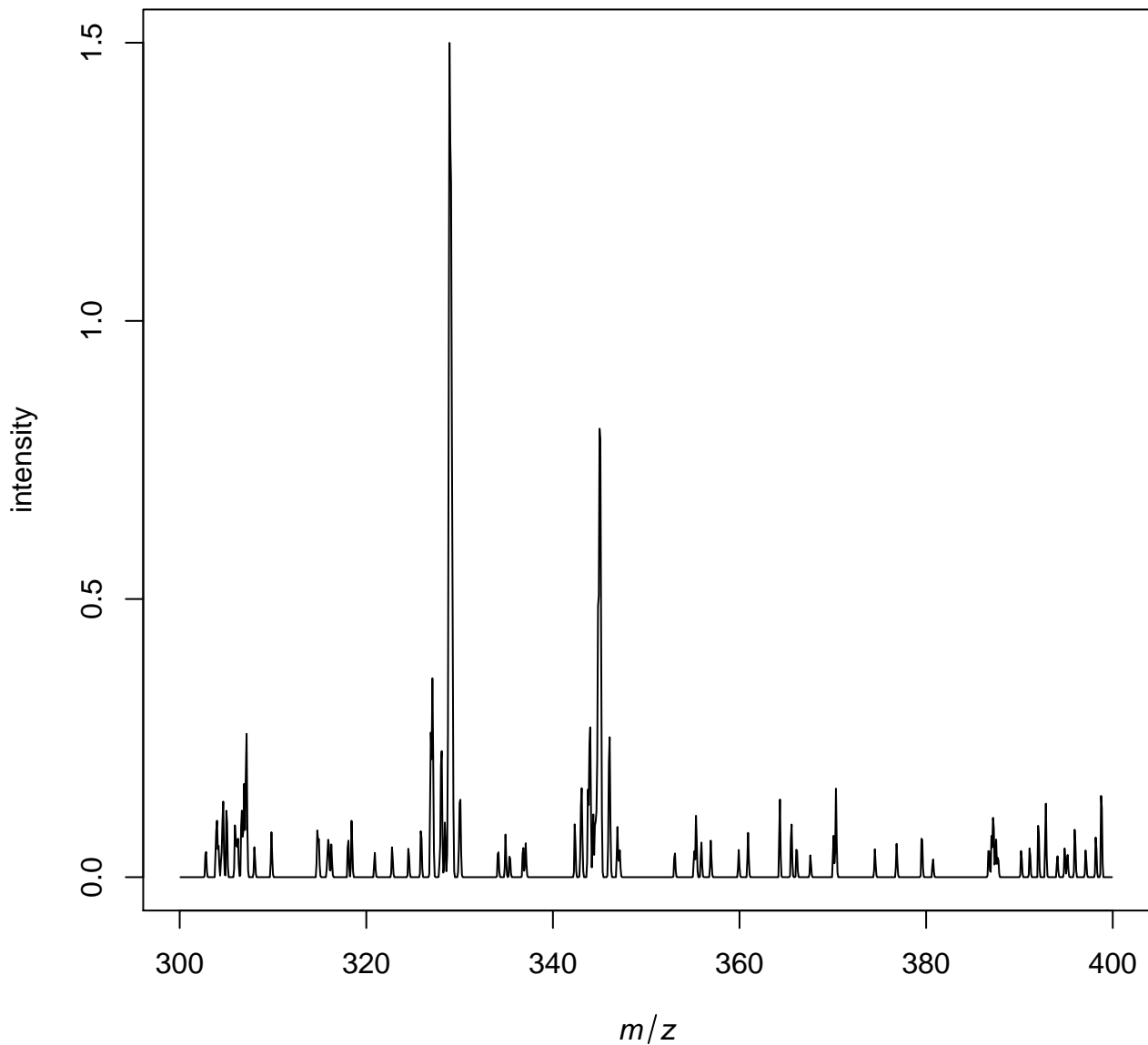
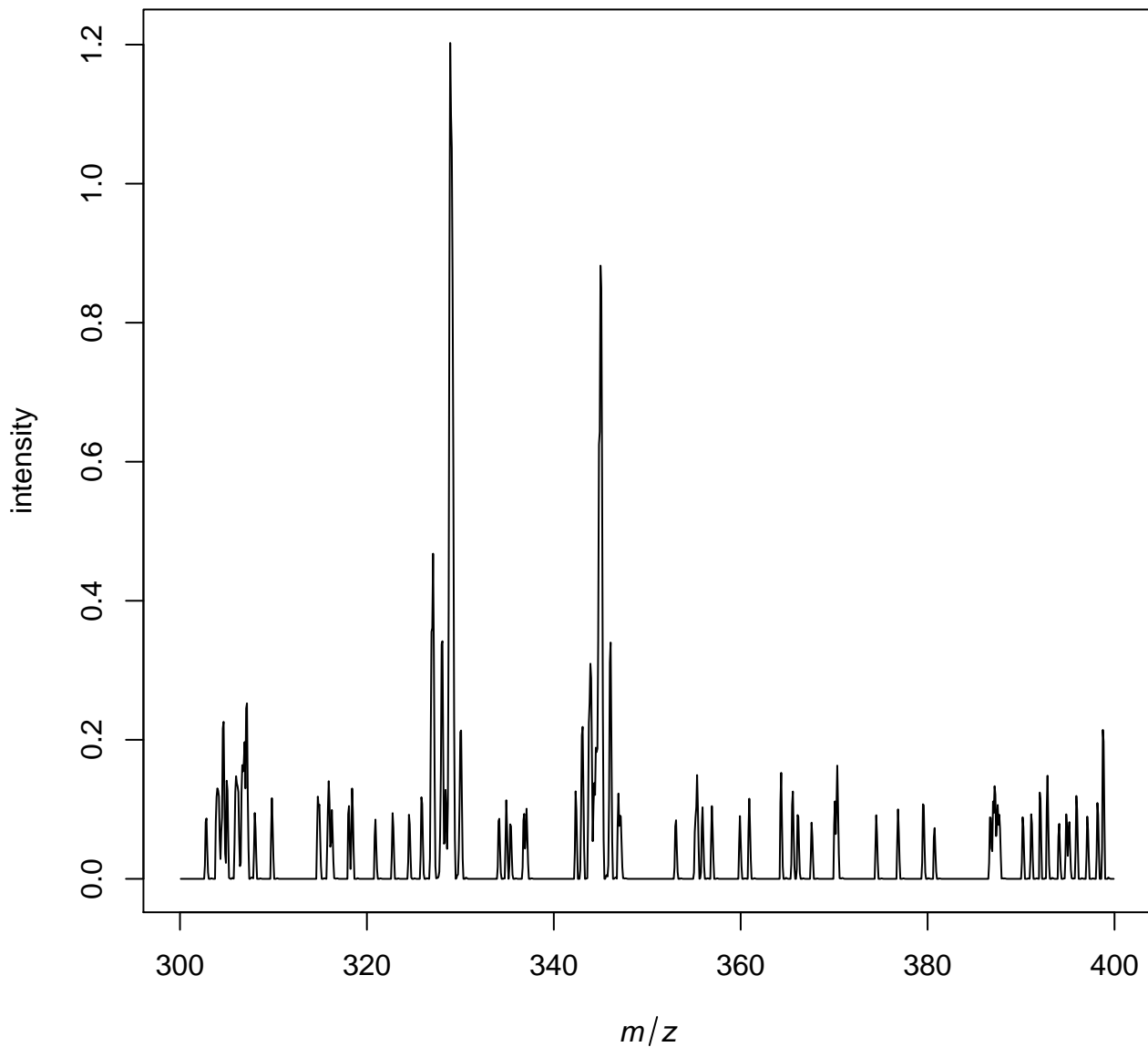


## Example\_Continuous.i

# Average spectrum for input file



# Average spectrum after transformation



	<b>min m/z</b>	<b>max mz</b>	<b># features</b>	<b>median # peaks (int.&gt;0)</b>	<b>median intensity</b>	<b>pixel number</b>
<i>inputdata</i>	300.0833	399.9167	1199	1199	0	6
<i>transformed</i>	300.0833	399.9167	1199	1199	0	6