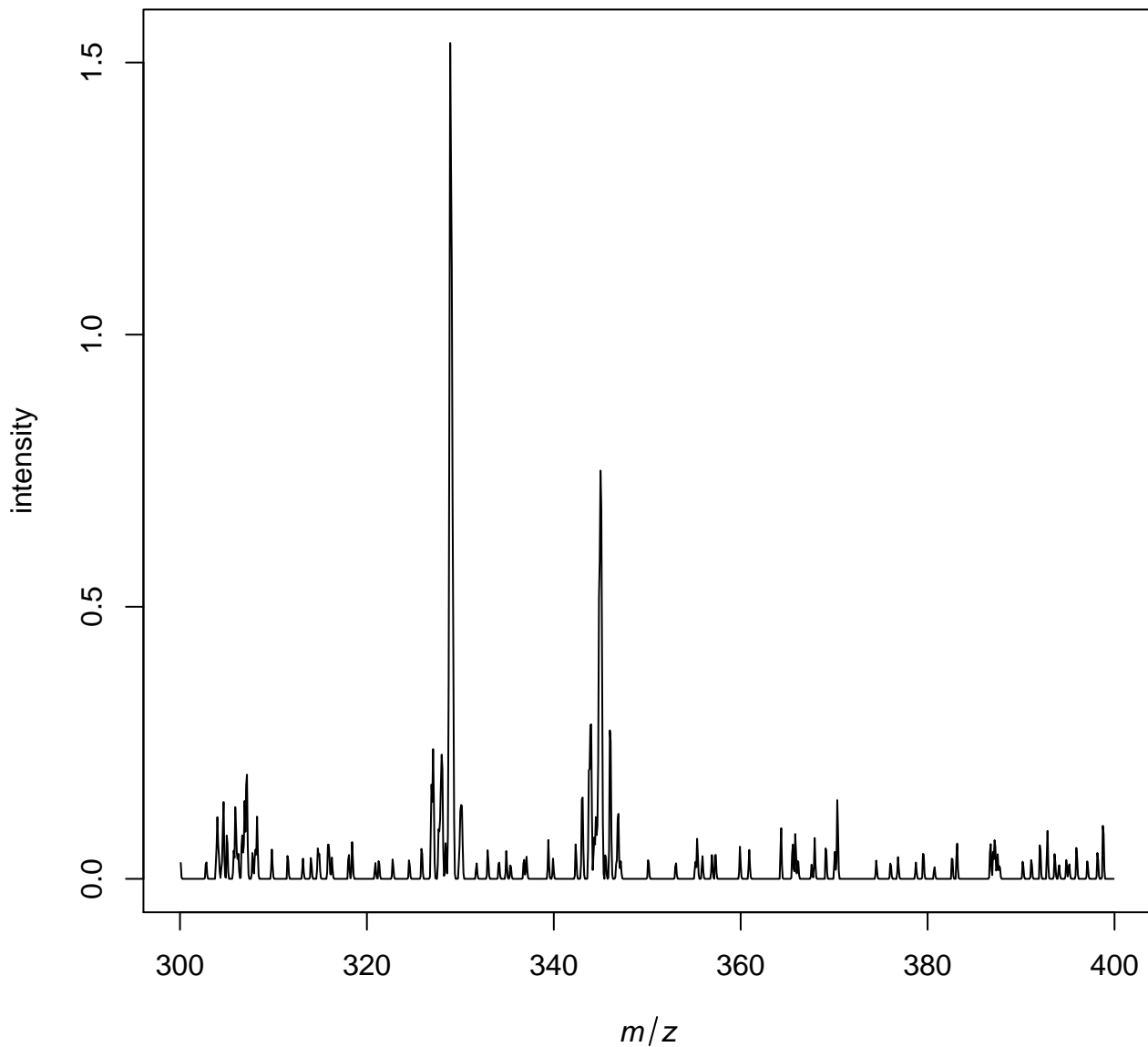
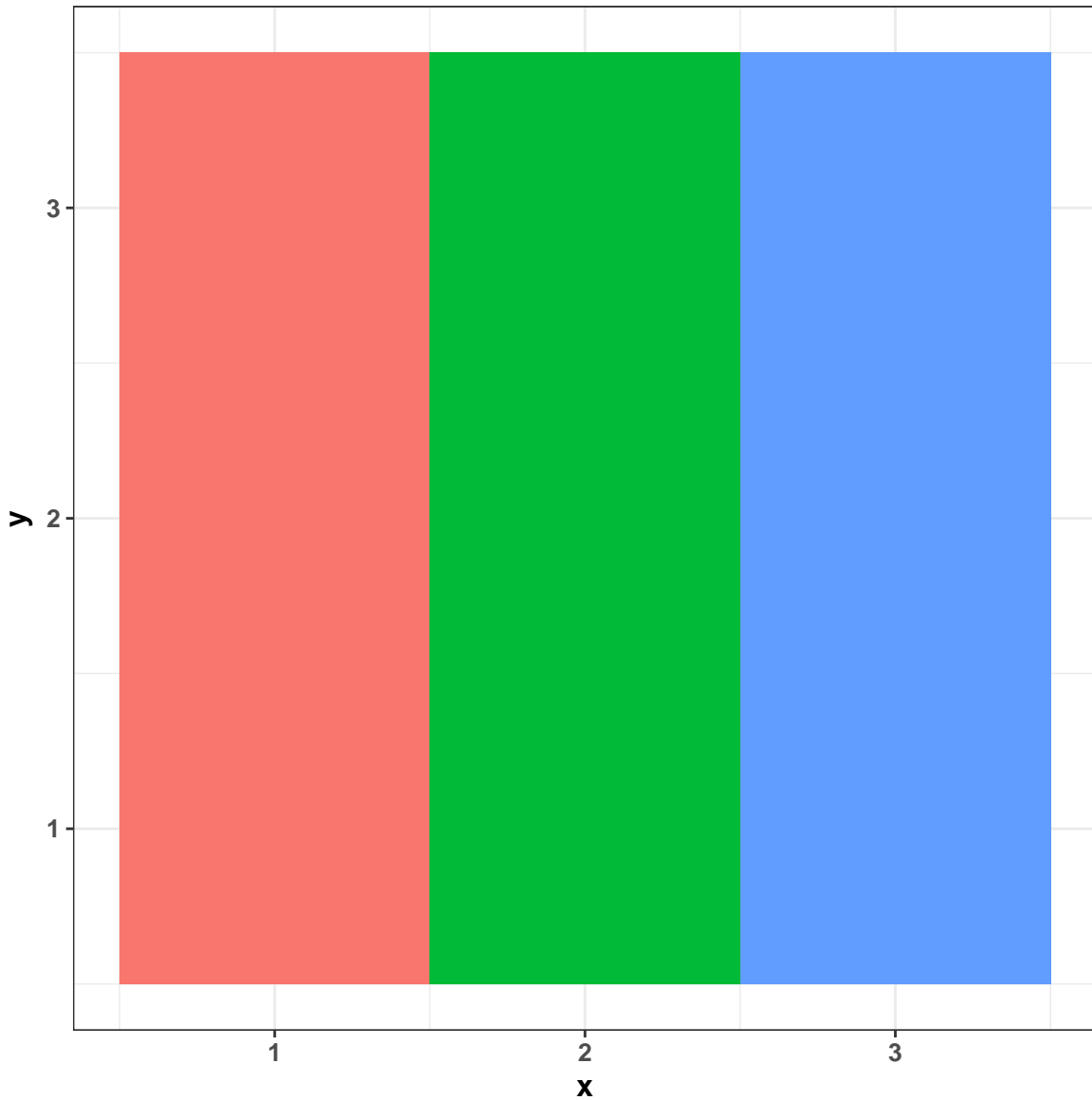


Uploaded Composite Dataset (imzml)

Average spectrum of input file



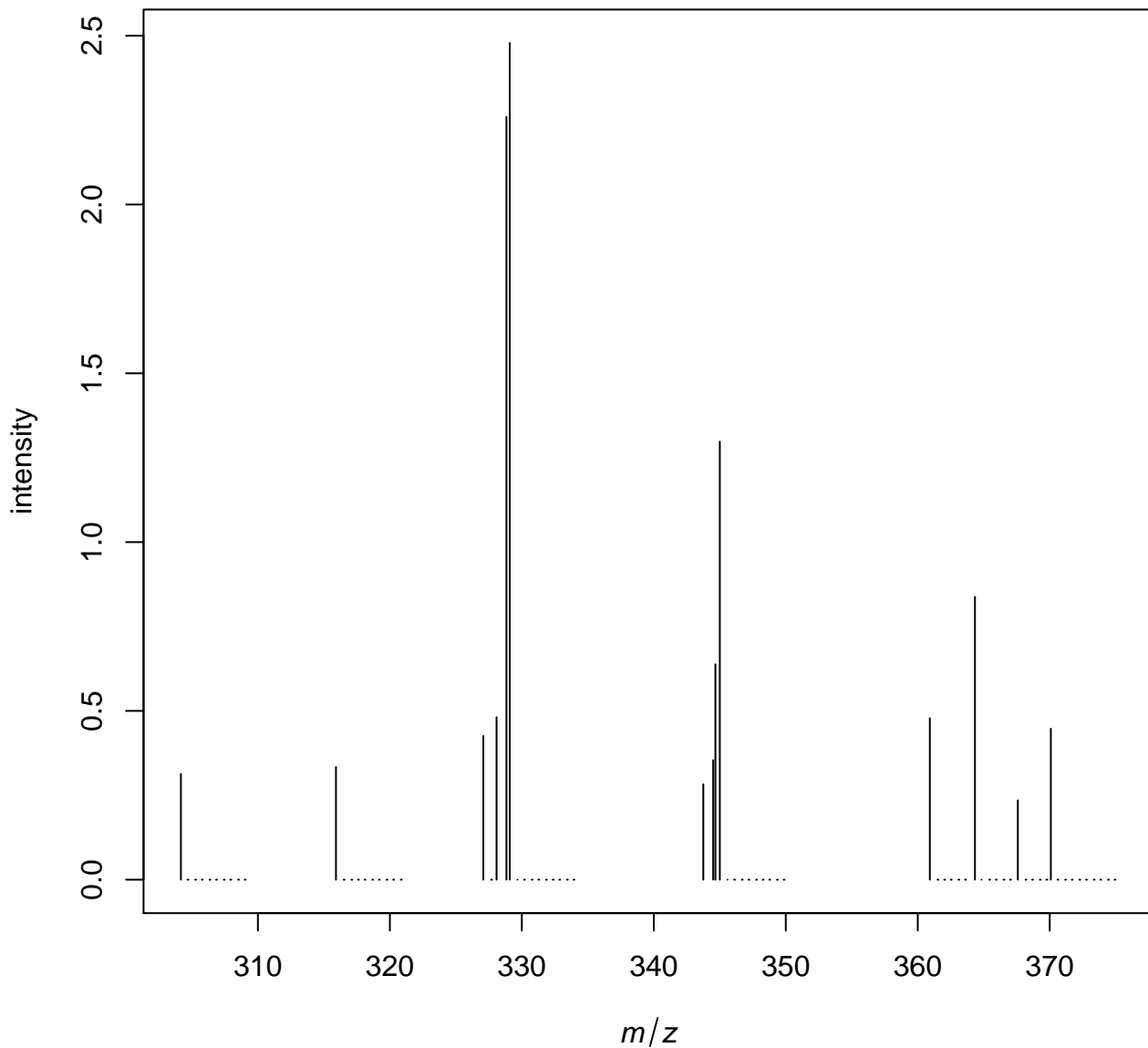
Spatial orientation of annotated data



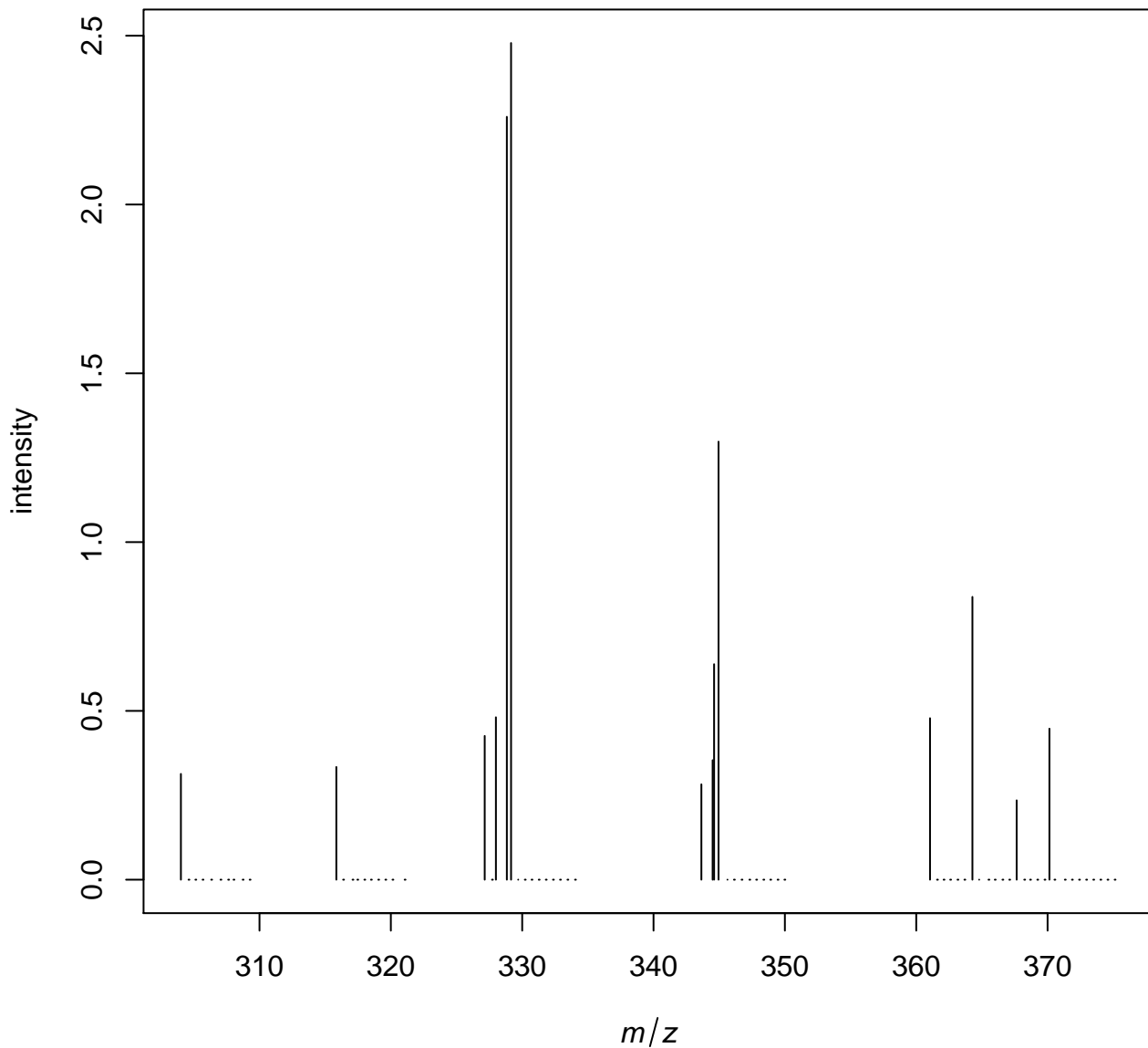
annotation

col1 col2 col3

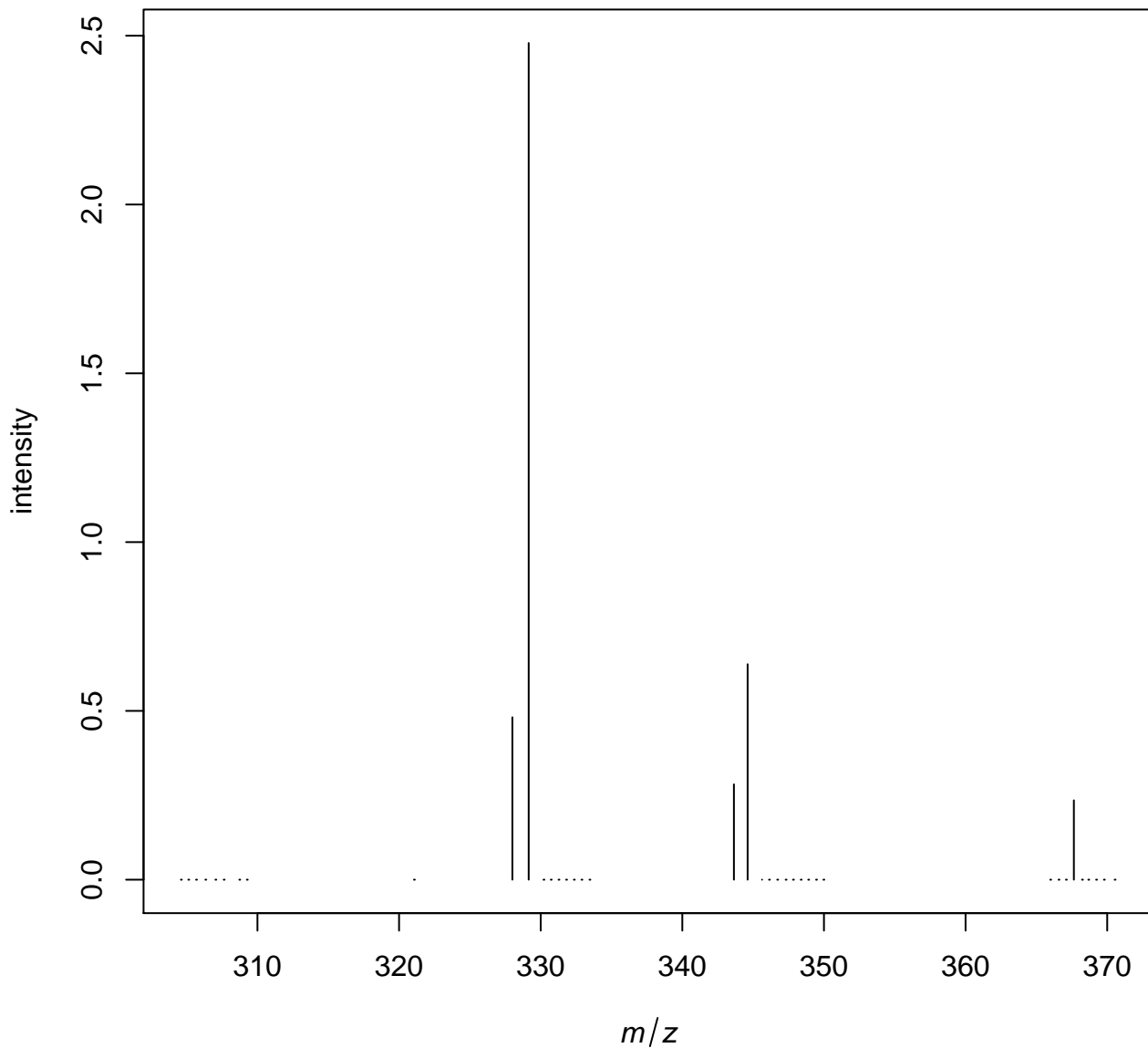
First spectrum after peak detection



First spectrum after binning



First spectrum after m/z filtering



	min m/z	max mz	# features	median intensity
<i>inputdata</i>	300.0833	399.9167	1199	0
<i>peaks_picked</i>	300.0833	399.8333	95.22	0
<i>binned</i>	300.1667	399.8333	95.22	0
<i>filtered</i>	304.5953	396.9167	33	0