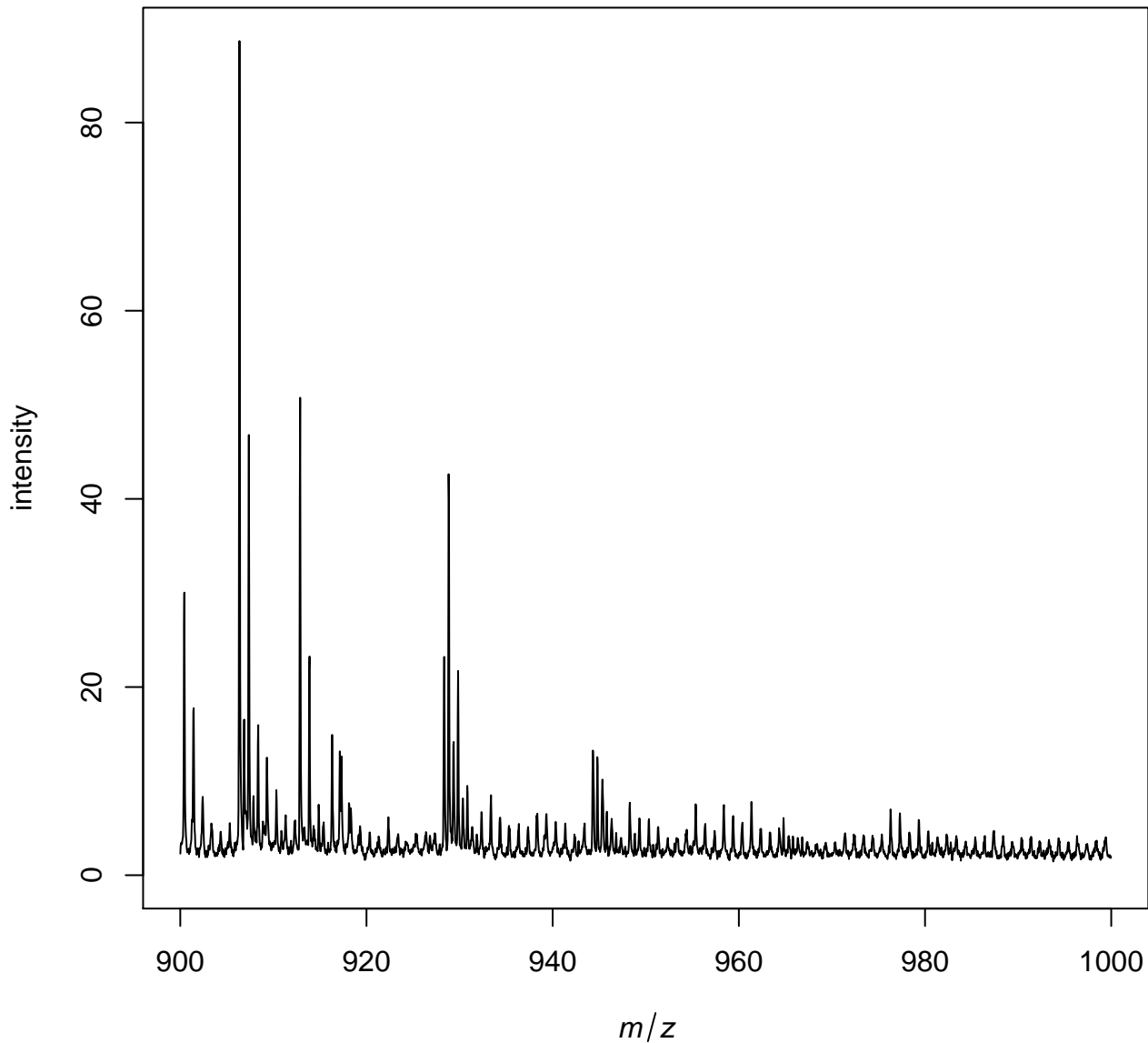
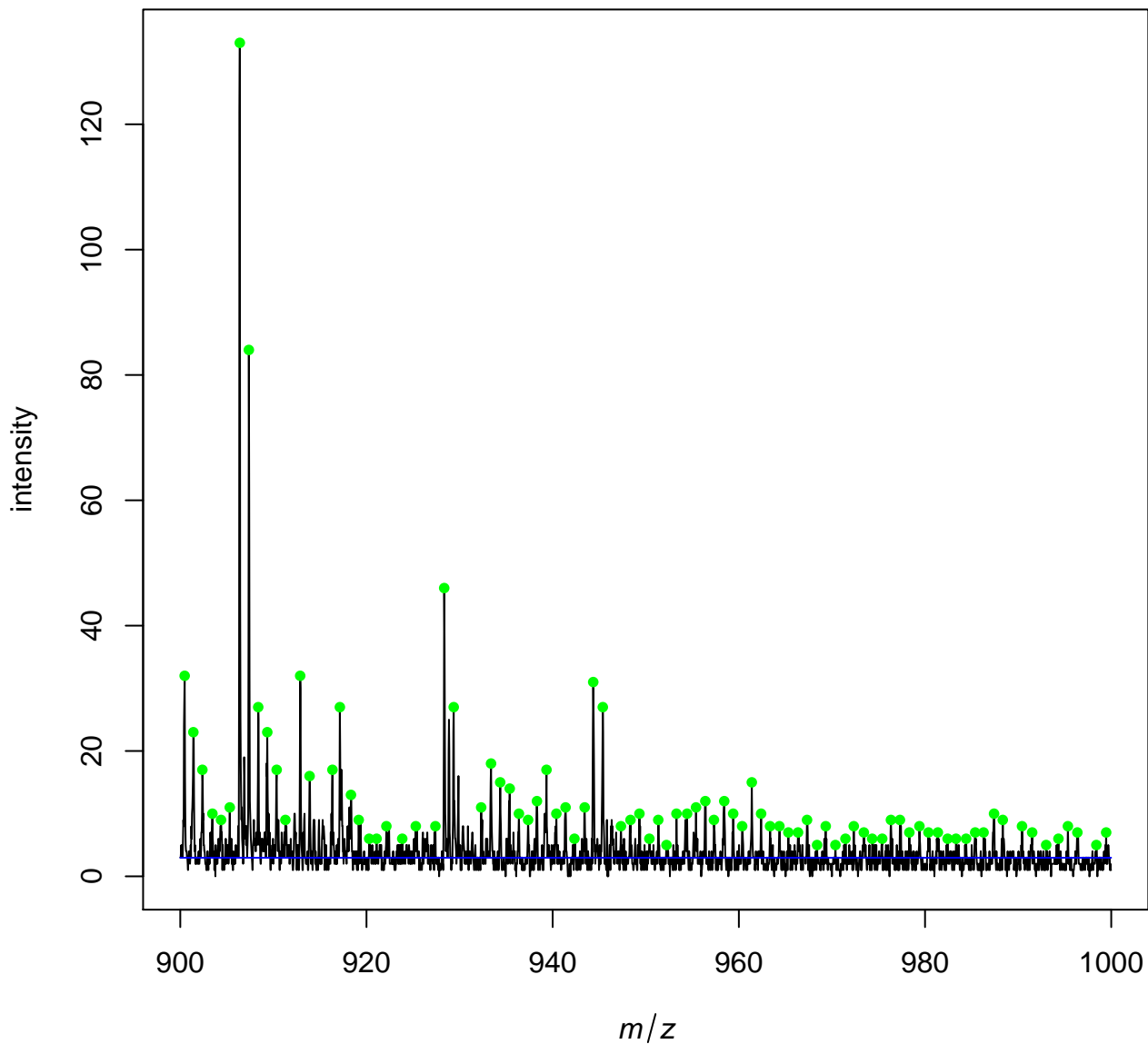


testfile_squares.rdata

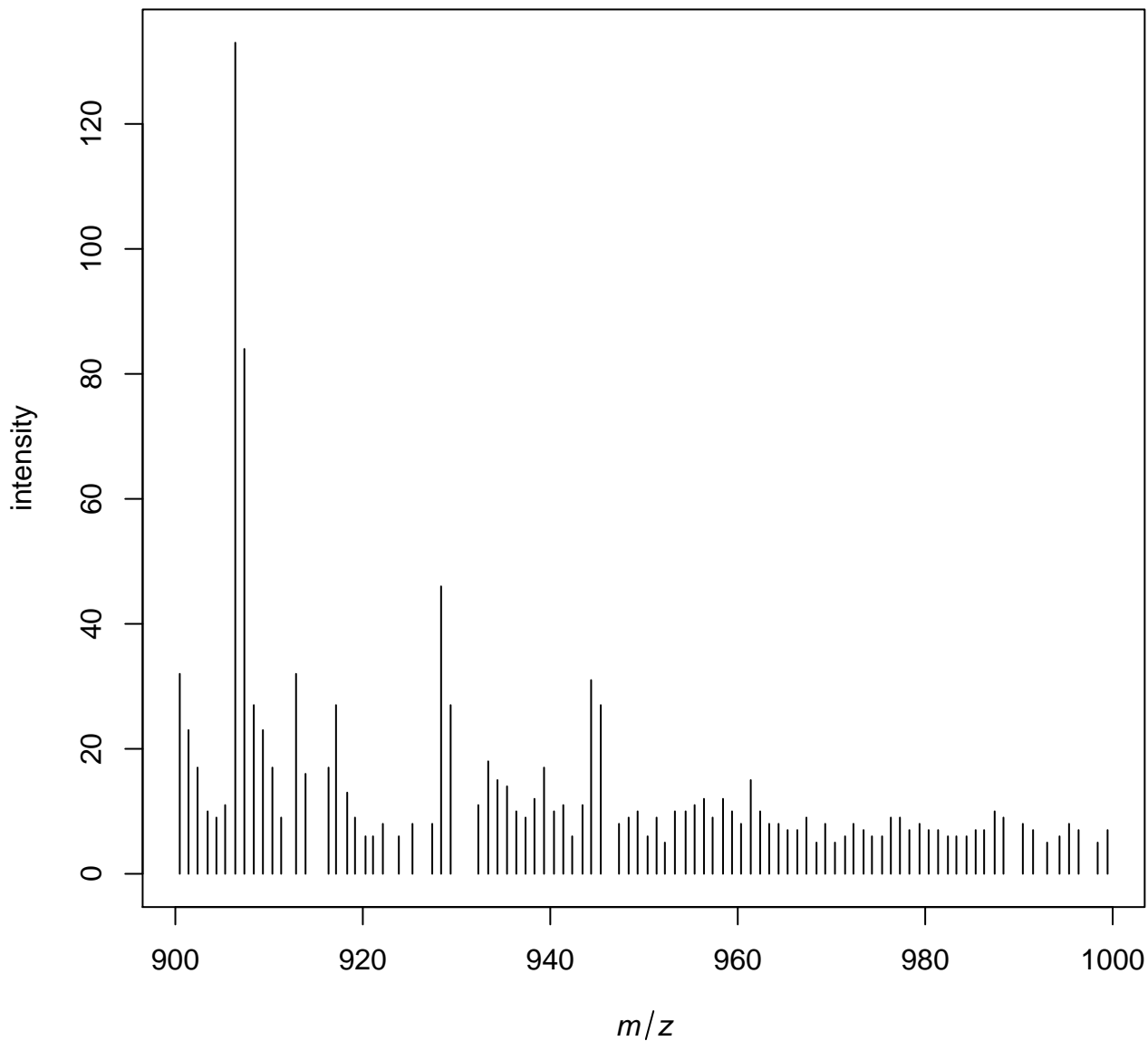
Average spectrum of input file



First spectrum with noise line (blue) and picked peaks (green)



First spectrum after peak detection



	min m/z	max mz	# features	median # features	median intensity
<i>inputdata</i>	900.0047	999.9845	2718	2718	3
<i>peaks_picked</i>	900.3989	999.4558	750	77.54	8