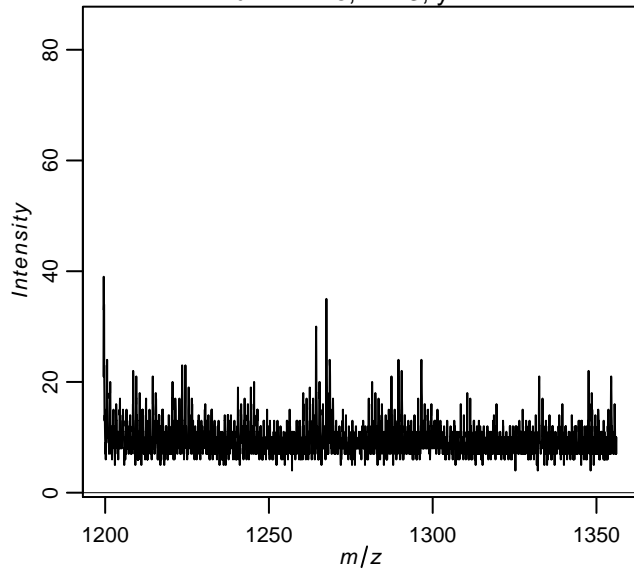


Quality control during preprocessing

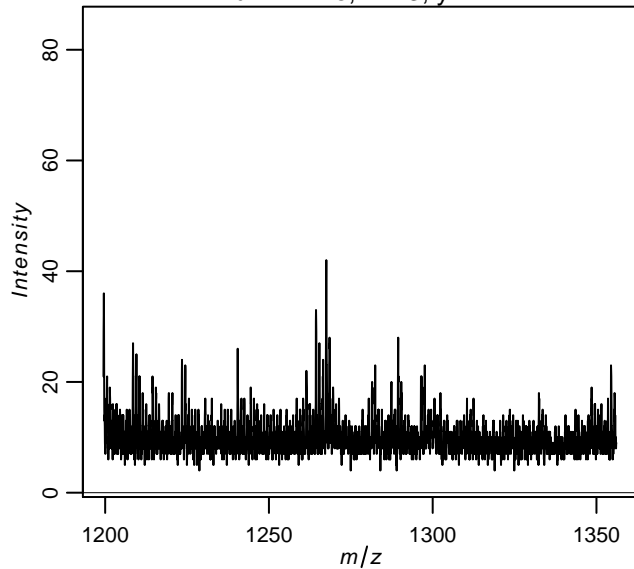
Filename: files_

Input spectra

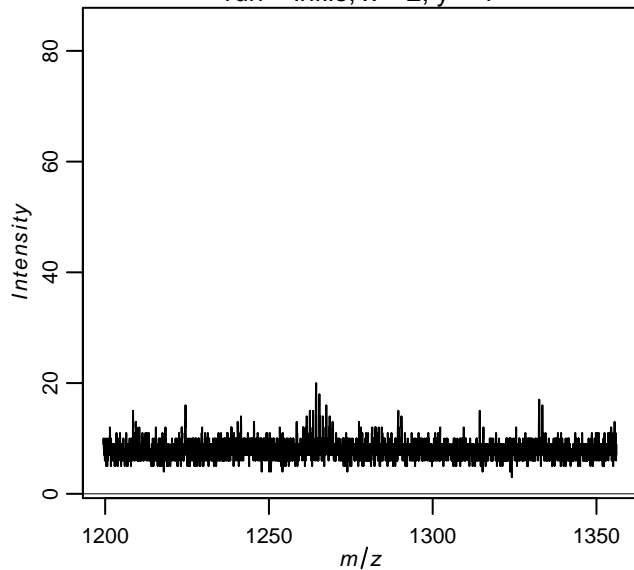
run = infile, x = 3, y = 2



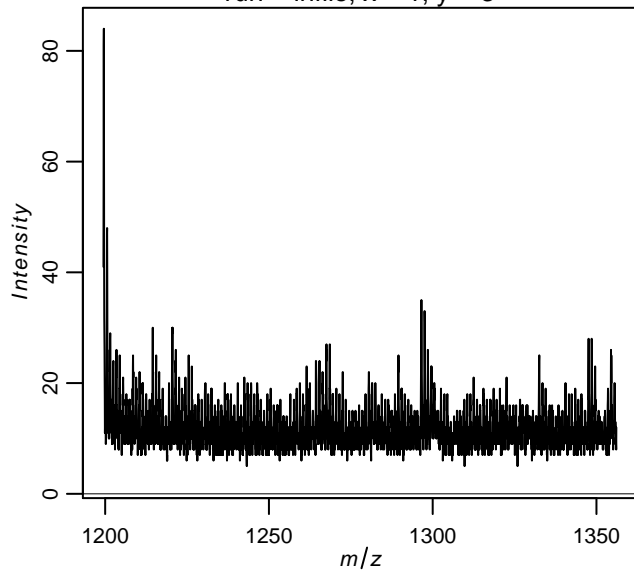
run = infile, x = 3, y = 1



run = infile, x = 2, y = 1

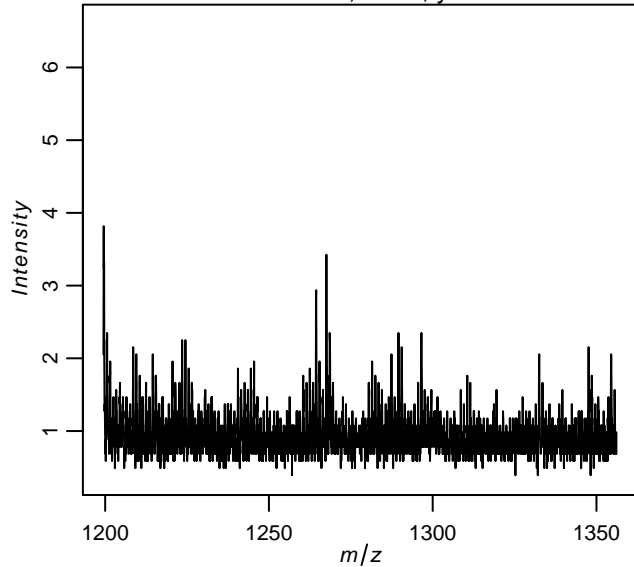


run = infile, x = 1, y = 3

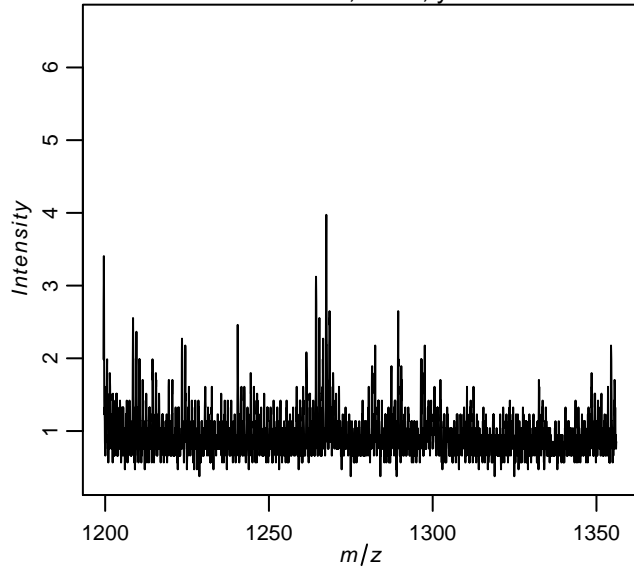


Spectra after normalization

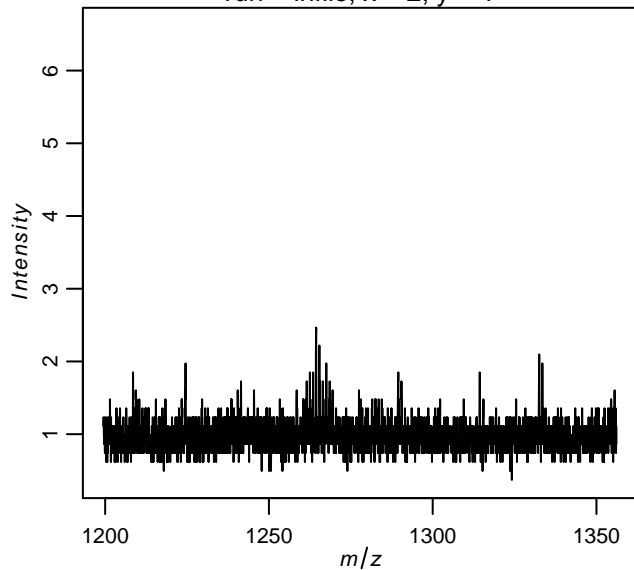
run = infile, x = 3, y = 2



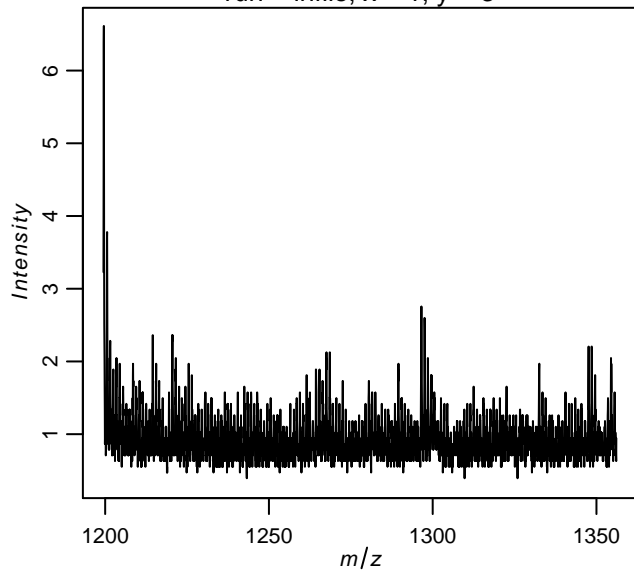
run = infile, x = 3, y = 1



run = infile, x = 2, y = 1

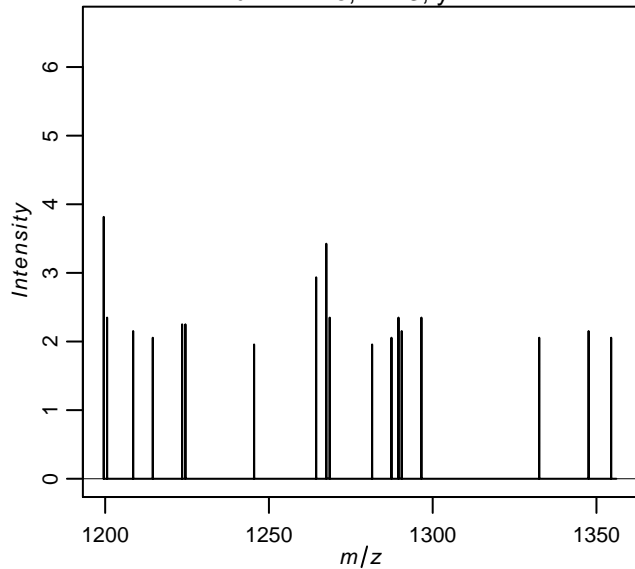


run = infile, x = 1, y = 3

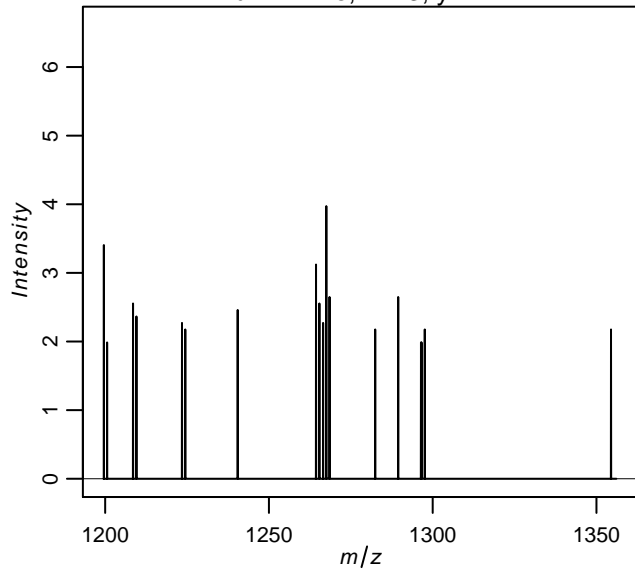


Spectra after peak picking

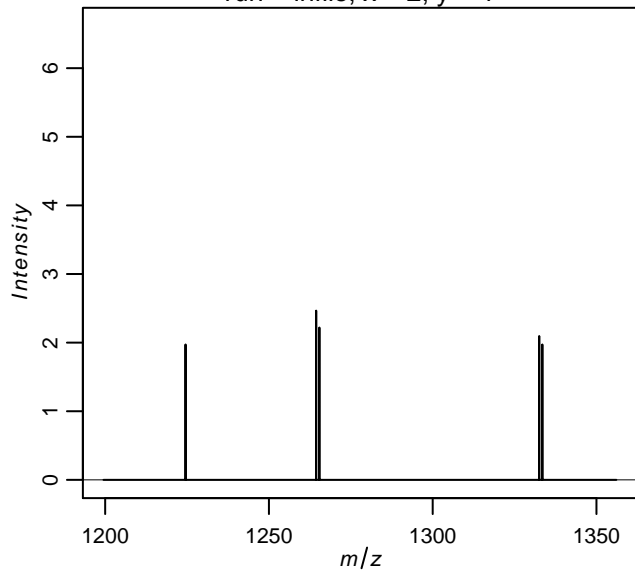
run = infile, x = 3, y = 2



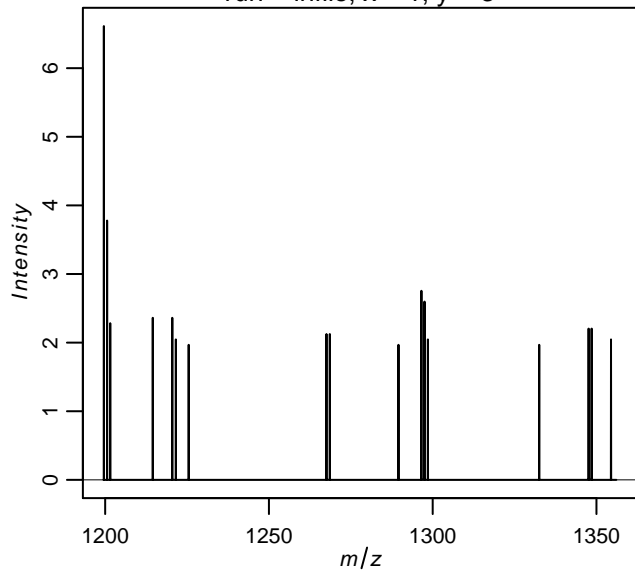
run = infile, x = 3, y = 1



run = infile, x = 2, y = 1

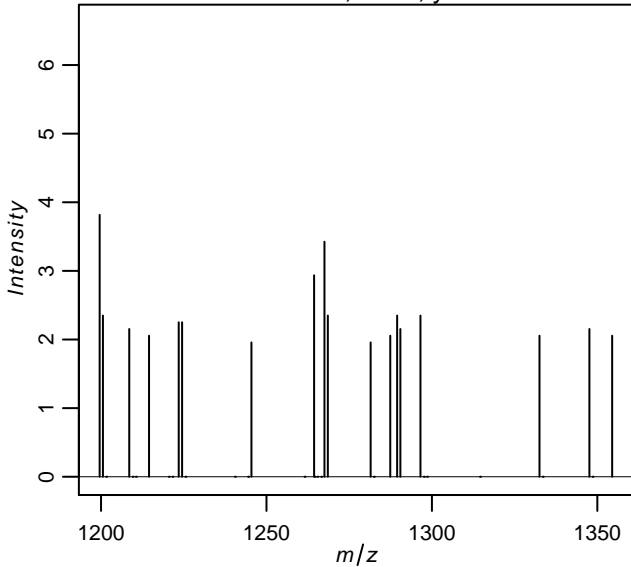


run = infile, x = 1, y = 3

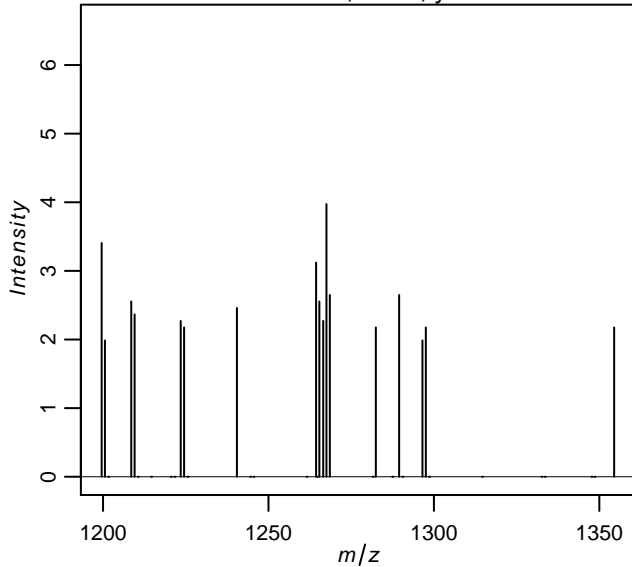


Spectra after alignment

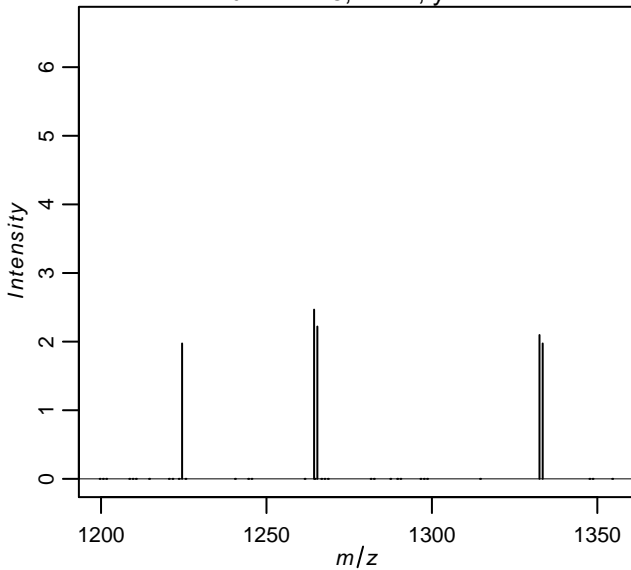
run = infile, x = 3, y = 2



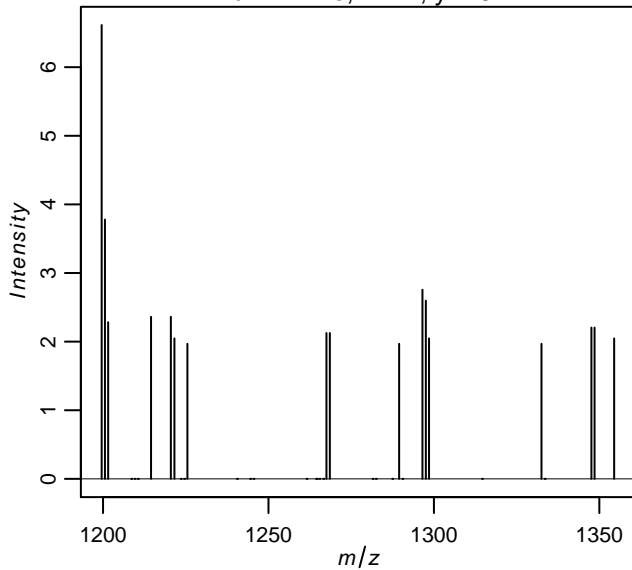
run = infile, x = 3, y = 1



run = infile, x = 2, y = 1



run = infile, x = 1, y = 3



	min m/z	max mz	# features	# spectra
<i>inputdata</i>	1199.47	1356.08	3672	9
<i>normalized</i>	1199.47	1356.08	3672	9
<i>picked</i>	1199.47	1356.08	3672	9
<i>aligned</i>	1199.58	1354.48	36	9