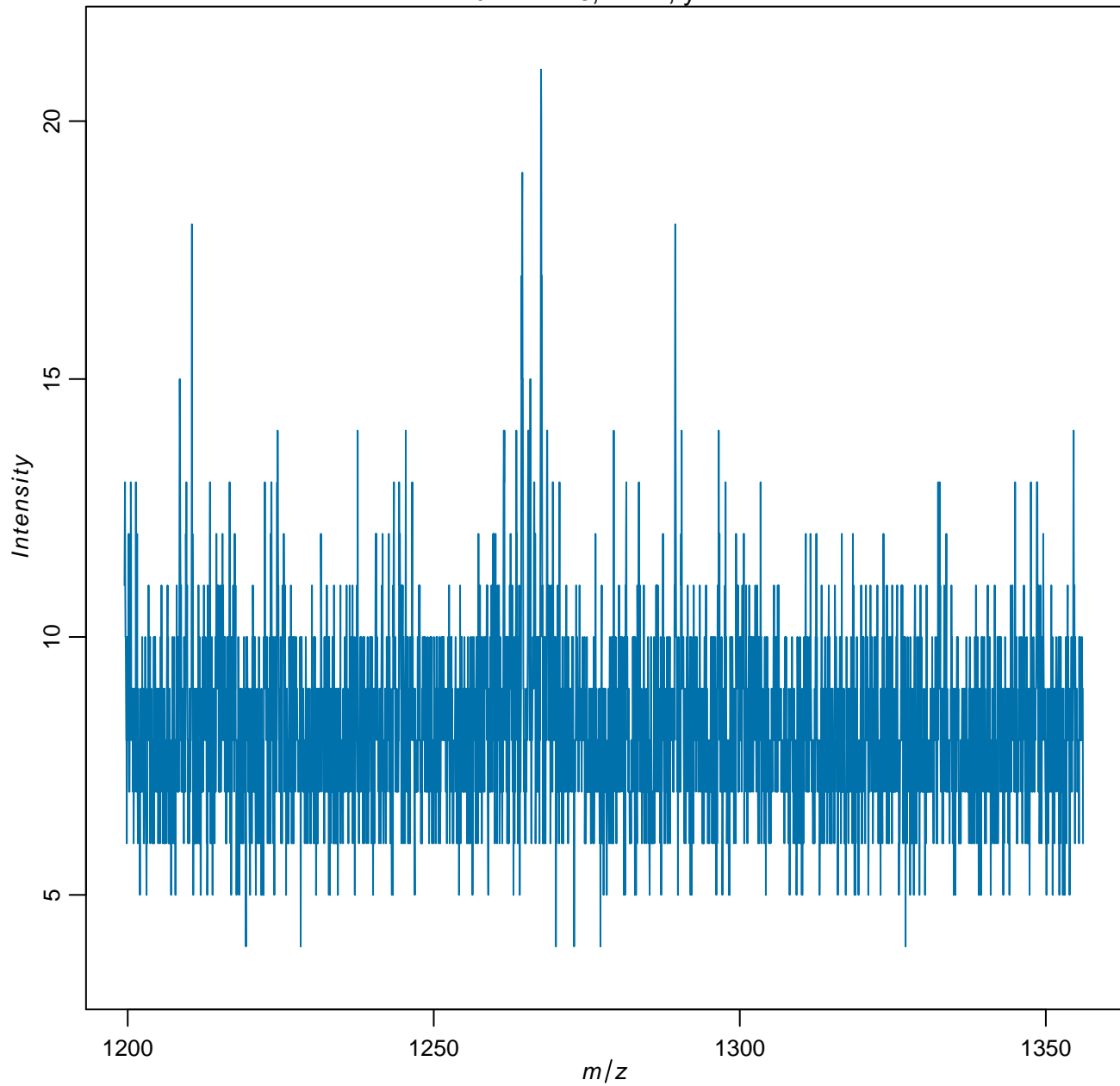


# Mass spectra for file:

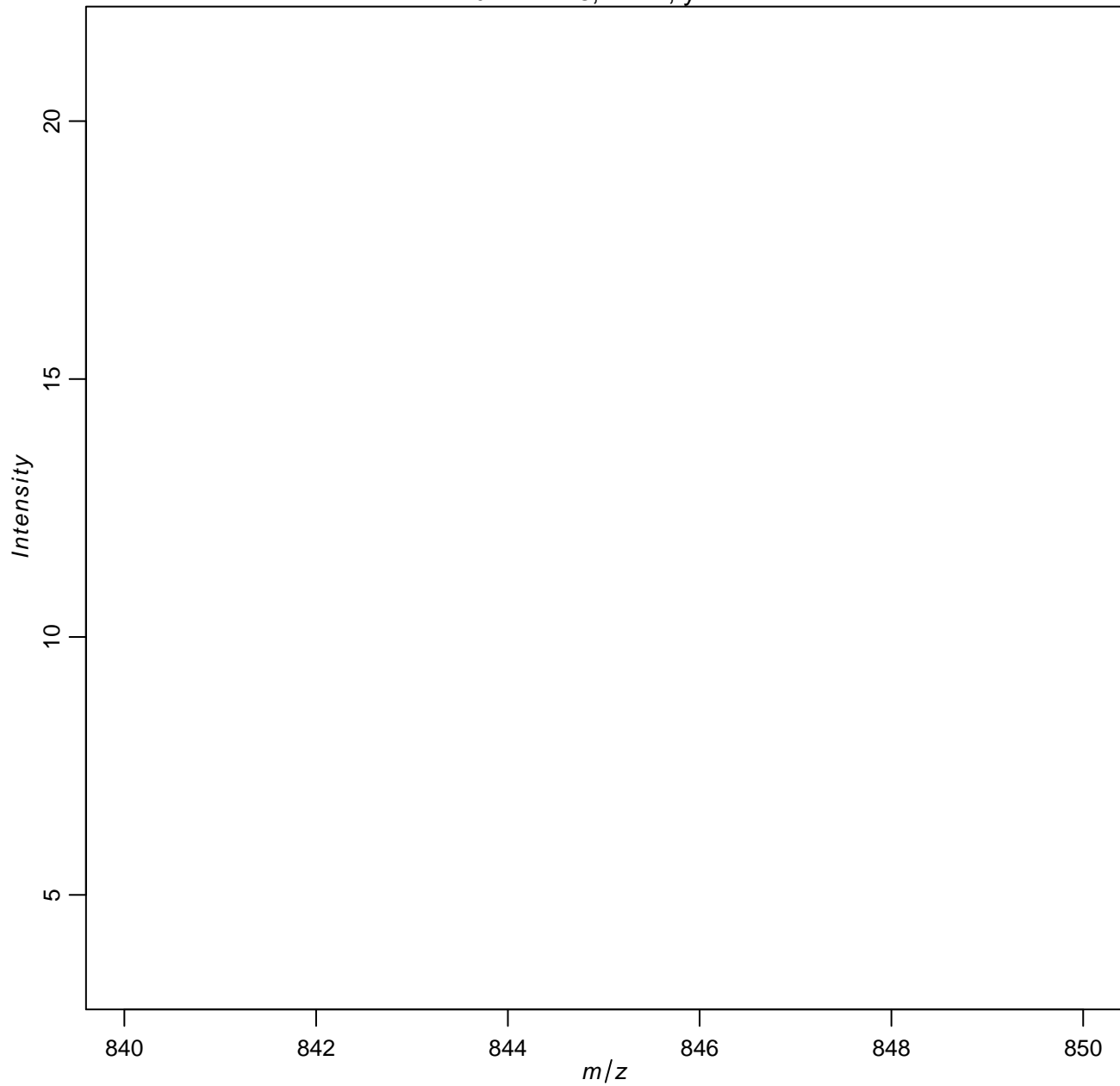
files\_

properties	values
Number of m/z features	3672
Range of m/z values	1199.47 – 1356.08
Number of pixels	9
Range of x coordinates	1 – 3
Range of y coordinates	1 – 3

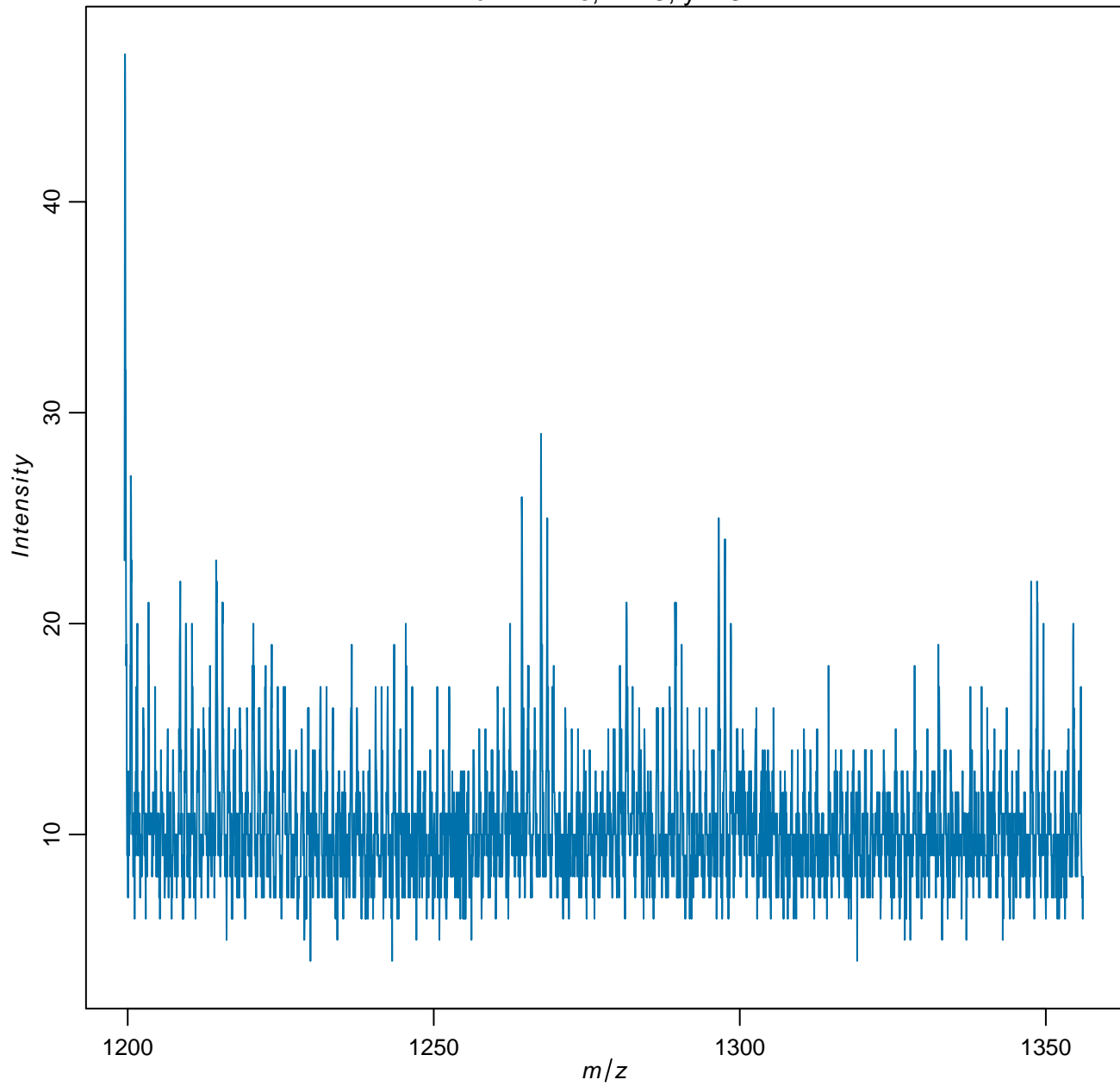
run = infile, x = 2, y = 2



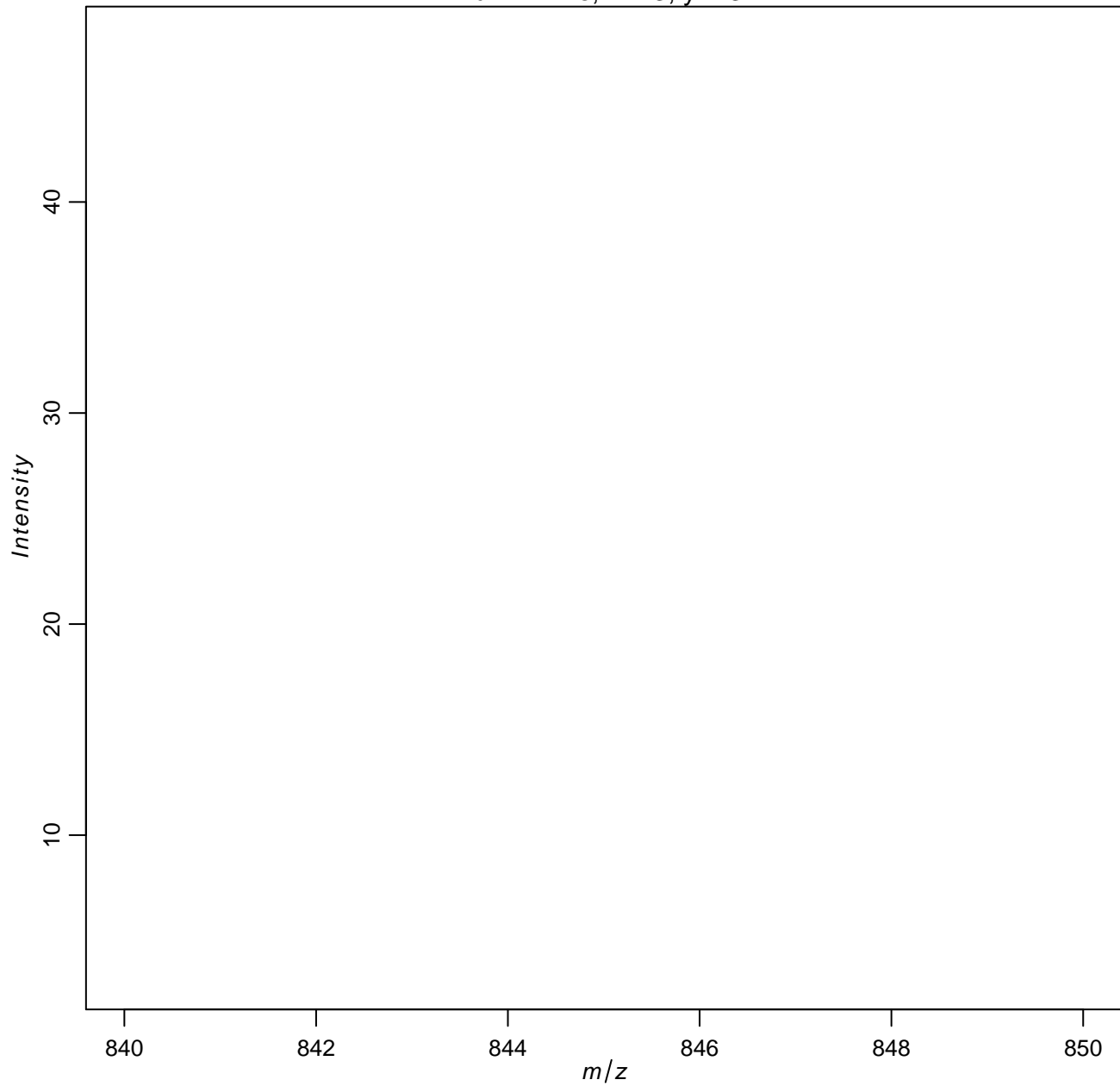
run = infile, x = 2, y = 2



run = infile, x = 3, y = 3



run = infile, x = 3, y = 3



## Overview of chosen pixel:

pixel coordinates	coordinates were found in this file
x = 2, y = 2	TRUE
x = 3, y = 3	TRUE